

# Immunisation Status in Children Receiving Care and Support in Wales: A National Data Linkage Study

Bailey GA<sup>1</sup>, Lee A<sup>1</sup>, Bedford H<sup>2</sup>, Perry M<sup>3</sup>, Holland S<sup>4</sup>, Walton S<sup>2</sup>, Griffiths LJ<sup>1</sup>

<sup>1</sup>Population Data Science, Swansea University Medical School, Swansea; <sup>2</sup>Population, Policy and Practice Research and Teaching Department, UCL Great Ormond Street Institute of Child Health, London; <sup>3</sup>Public Health Wales, No 2 Capital Quarter, Cardiff; <sup>4</sup>Children's Social Care Research and Development Centre, School of Social Sciences, Cardiff University, Cardiff.

Publication: <https://doi.org/10.3389/fpubh.2023.1231264>

## Background

Not receiving vaccines, or receiving them early or late leaves children unprotected against preventable diseases. Children receiving support from social care services are a vulnerable group, whom face a range of health challenges, including incomplete immunisation. Identifying factors associated with suboptimal vaccine uptake may help **improve vaccine timeliness and uptake**.

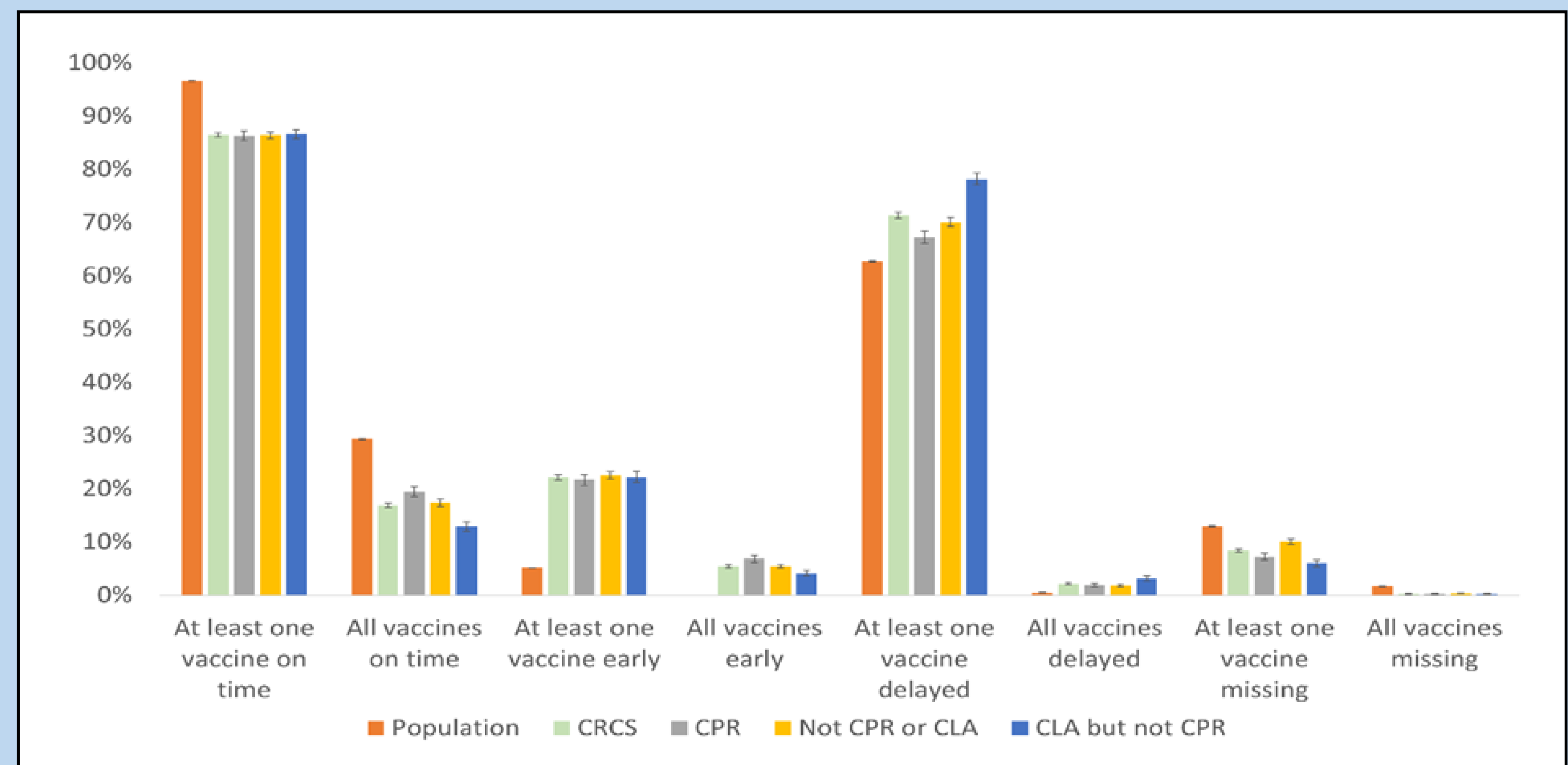
### AIMS

- Examine timeliness of vaccine receipt in children receiving care and support
- Assess the validity of the immunisation status flag



## Results

- ◆ **87%** of children receiving care and support received at least one vaccine on time compared to **97%** of the comparison cohort
- ◆ **8%** of children receiving care and support were unvaccinated compared to **13%** of the comparison cohort
- ◆ **Early and delayed vaccines** were more common in the CRCS cohorts



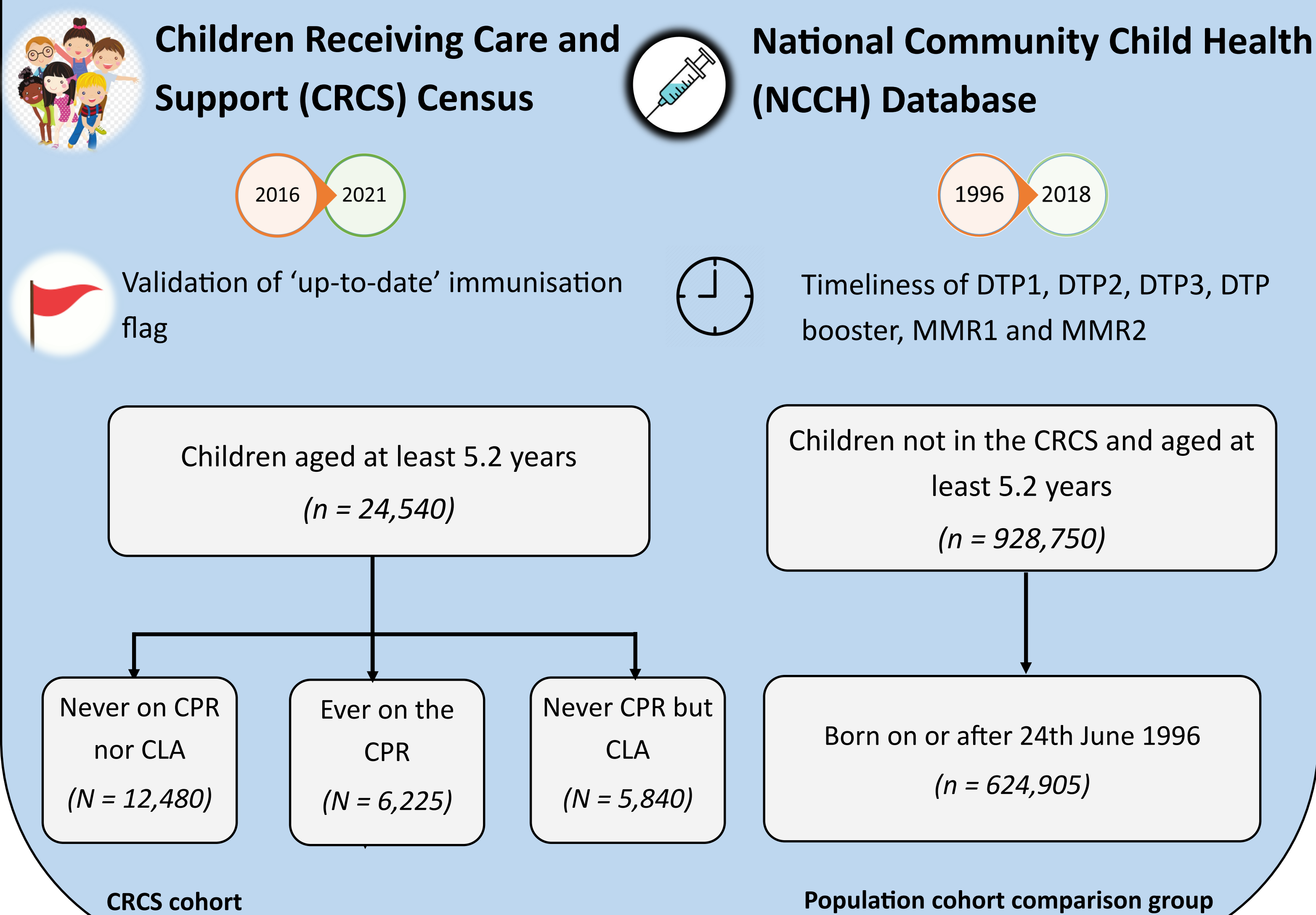
Proportion of children who received a vaccine on time, early, delayed or missing

	CRCS cohort	Never CPR nor CLA	Ever CPR	Ever CLA
<b>n Flag correct</b>	41825 (73.7%)	15660 (70.1%)	10235 (74.5%)	15935 (77.2%)
<b>n Flag incorrect</b>	14890 (26.3%)	6670 (29.9%)	3505 (25.5%)	4715 (22.8%)

- ◆ Immunisation flags were correct for ~70% of the CRCS cohort

## Method

Anonymised, individual data was acquired from the Secure Anonymised Information Linkage (SAIL) Databank using:



## Strengths & Limitations

- ✓ Large sample size
- ✓ Reduced parental recall bias
- ✓ Longitudinal monitoring of vaccine uptake
- ✗ Relies on administrative data being correct and up-to-date
- ✗ Limited to six childhood vaccines
- ✗ No in-depth analysis of yearly trends
- ✗ Variations in vaccine timeliness definitions make it difficult to make comparisons to other studies

## Conclusion

- Children receiving care and support are **more likely** to be immunised than the general child population in Wales
- Care plans and health interventions have a positive impact on vaccine uptake
- More **interdisciplinary co-ordination and planning** is needed to improve vaccine timeliness